

EMERGENCY  
SERVICES  
FOUNDATION

# *Annual Report* **2012**

## Contents

<i>Highlights of the Year</i>	<i>1</i>
<i>Board of Management</i>	<i>2</i>
<i>Secretariat</i>	<i>2</i>
<i>How the ESF is Structured</i>	<i>2</i>
<i>Chairman's Report</i>	<i>3</i>
<b>Committee Reports</b>	
<i>Disaster and Relief</i>	<i>6</i>
<i>EMC 2012 Conference</i>	<i>7-9</i>
<i>The Alumni</i>	<i>10</i>
<i>Scholarships</i>	<i>11</i>
<i>Scholarship Testimonials</i>	<i>12</i>
<i>Financials and Governance</i>	<i>13</i>
<i>Statement of Financial Performance</i>	<i>15</i>
<i>Statement of Financial Position</i>	<i>16</i>
<i>Scholarship Testimonials</i>	<i>17</i>

## The Emergency Services Foundation (ESF)

### Mission and Vision

The ESF was created to:

- Provide immediate financial relief to Victorian emergency service workers and their families in the event of a fatality or injury in the line of duty.
- Support research into issues of importance to the emergency services industry and the community.

### Background

The ESF was founded following the 'Ash Wednesday' bushfires in 1983. At this time a public appeal was launched to provide financial assistance to emergency service workers and their families, recognising the on-going hardship experienced as a result of death or injury sustained in the line of duty. The appeal's sponsors agreed to use the residual funds to institute the ESF Trust.

Since its inception in 1987, a number of Victorian emergency service workers and their families have received financial benefits from the ESF. In addition, the ESF Scholarship Scheme has awarded more than 90 scholarships over a diverse range of research projects. The ESF Alumni provides a network for these scholarship recipients enabling knowledge sharing and a continued commitment to the work of the ESF.

## Member Agencies



## 2012 Highlights

- 'New Era Management' was the theme for the Conference in 2012. This annual event was again well attended with over 40 presentations over the two days, the opening keynote given by Councillor Bob Parker, Mayor of Christchurch.
- The conference dinner held on 10 July 2012 was the largest ESF conference dinner to date with thanks to our sponsors.
- Highly successful inaugural Volunteer Leaders Forum weekend held in Bendigo in May. Attended by the Hon Peter Ryan, Minister for Police and Emergency Services and Mayor of Bendigo, Councillor Alec Sandner, plus 120 volunteers from across Victoria.
- Annual Raheen luncheon attended by 44 people including the scholarship recipients and their partners, the ESF Board and other key emergency services personnel.
- Two Scholarship Information Nights held at MFB Burnley and hosted by the ESF scholarship Alumni management team.
- Financial assistance given to two families following death in the line of duty of two volunteer fire-fighters.
- Eight scholarships awarded to volunteer and career emergency service personnel, across five agencies. Volunteer scholarships funded through the Office of the Emergency Services Commissioner.
- Three senior visiting students from the Worchester Polytechnic Institute (USA) – Jocelyn Close, Scott Burger and Steve Berselli presented their social media project in early May attaining a high distinction grading.
- Work commenced on a publication and website treatment to celebrate 25 years of the Foundation.
- Peter Lester and Kieran Walshe retired from the Board. Tim Cartwright, Deputy Commissioner, Victoria Police and Craig Lapsley, Fire Services Commissioner, Victoria, were appointed to the Board.



## Board of Management

**Neil Bibby**  
*Chairman*

**John Warburton**  
*Treasurer/Secretary*

**Mick Bourke**  
*Country Fire Authority*

**Greg Sassella**  
*Ambulance Victoria*

**Nick Easy**  
*Metropolitan Fire and  
Emergency Services Board*

**Tim Cartwright**  
*Victoria Police*

**Mary Barry**  
*Victoria State Emergency Service*

**Craig Lapsley**  
*Fire Services Commissioner Victoria*

**Laurie Lavell AM**  
*Director*

**Jeanne Pratt AC**  
*Director*

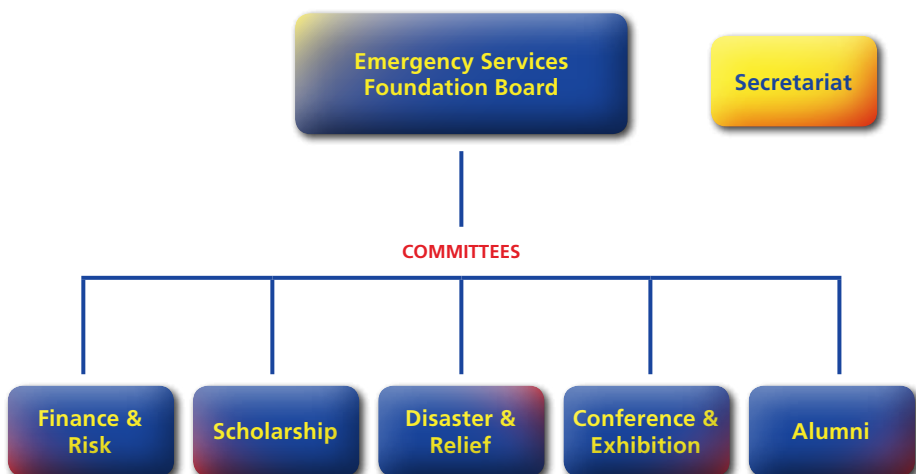
**Neil Soullier OAM**  
*Director*

**Catherine Dunlop**  
*Director*

### **Secretariat**

**Jenny Davis**  
*Executive Officer*

## How the ESF is Structured





**Neil Bibby**  
*Chairman*

## ***From the Chairman***

---

Coming into the chairmanship of the ESF was a great honour and I am very much aware of the responsibility that places upon me. The emergency services sector owes a lot to my predecessor Laurie Lavelle, from his role as Chief Officer of the MFB, Chief Executive of AFAC and, for us, Chairman of the Emergency Services Foundation. Many are not aware that Laurie was a part of the founding of the ESF in 1984 and is continuing on as a board member, making next year, 30 years service for the Foundation. Laurie's reflections on his time with the Foundation in last year's annual report are well worth reading and they are available on our web site [www.esf.com.au](http://www.esf.com.au). We are recognising Laurie Lavelle's contribution by naming the key note address at the ESF conference the Laurie Lavelle Lecture.

### ***Board***

This year we said good-bye to two directors. Peter Lester was presented with an honorary life membership at our December meeting for his active contribution over many years with the Foundation. Peter was active in strategic planning for the Foundation and chaired the Disaster Relief Committee. The other board member to leave us was Kieran Walshe. Kieran's experience in the sector across all agencies brought a guiding hand to the Board. It is the Foundation's intention to present Kieran with an achievement award to recognise his significant contribution.

The Foundation welcomed two new Board members adding their experience and insight. Deputy Commissioner Tim Cartwright, Victoria Police, and Craig Lapsley, Fire Services Commissioner Victoria are warmly welcomed and I am delighted two people with such wonderful credentials are joining our Board. We look forward to a strong working relationship.

### **Immediate financial assistance**

The primary purpose of the ESF is to provide financial assistance to families of emergency service personnel who lose their lives or are seriously injured in the line of duty. Unfortunately this year saw the death, in the line of duty, of Second Lieutenant Peter Harry from the CFA. Peter died while undertaking fire fighting activities during a house fire in Gisborne in December.

While composing this report and not strictly for the calendar year 2012, in January, DSE firefighter Peter Cramer died while assisting our colleagues in Tasmania at the Forcett fire. Peter was also a CFA volunteer for over 20 years.

The Foundation was able to exercise its primary reason for being and quickly assisted the families of our two comrades. We sent our heartfelt and deepest sympathies to the families in their time of need.

This summer season has proved to be very dangerous and at the time of preparation of this report we know other fatalities have been suffered in our firefighting community. These will be reported on in detail in next year's annual report.

### **Scholarships and research**

Eight scholarships were awarded this year across five agencies, with a mixture of volunteer and career staff the recipients. Following on from 2011 this has been a great outcome and was due to the hard work of the Scholarship Committee chaired by Shane Wright and the Alumni who provided two information evenings for those wishing to apply for a scholarship. The Alumni also provided mentors to assist with the application writing.

The Foundation would like to thank the State Government and in particular the Department of Justice for its contribution to the Scholarship fund which allows ESF to provide additional scholarships to Volunteers.

Three students from Worcester Polytechnic Institute (WPI) provided the Foundation and Victorian Government with a research paper on the use of social media in crisis situations. The paper is available on the ESF web site.

It was presented to the Department of Premier and Cabinet (DPC) in early May and a wider audience in mid May. The quality of the paper was such that the students gained high distinctions. ESF would like to thank DPC for providing office accommodation for the students while they were undertaking their research.



## Conferences

This year saw the inaugural Volunteer Leaders Forum in May. The forum was held over the weekend of 12 and 13 May and attracted 120 delegates from a diverse range of agencies. A combination of lectures, workshops and social events resulted in a high level of interaction between all delegates. The conference was opened by the Honourable Peter Ryan, Minister for Police and Emergency Services and was attended by Cr Alec Sandner, Mayor of Bendigo. The feedback survey post the conference was very positive and has encouraged the Foundation to run a second forum in 2013. The Foundation would like to thank the State Government for its financial support.

The conference in July of 2012 was attended by 316 delegates and 19 exhibitors and although numbers were slightly down on the previous year the feedback was again excellent.

The theme was "New Era Management" and the conference was kicked off with a keynote address from Councillor Bob Parker, Mayor of Christchurch and concluded with an insightful paper from former Victoria Police Commissioner Neil Comrie. This presentation was read by Brian Hine due to Mr Comrie not being able to attend for medical reasons. In all there were 41 entertaining and thought provoking presentations making the conference an excellent success.

On behalf of the Board, I would like to thank the sponsors for this year's conference dinner; Blue Star Printing, Maddocks, Victoria Police and Scott Safety. The dinner was hosted by Darren James (3AW), and the guest speaker was Don McLardy, President of Melbourne Football Club, who gave an emotion-charged presentation centred on Jim Stynes.

There are a large number of people who need thanking for pulling together the inaugural Forum and 2012 Conference. Special thanks go to Mark Swiney and his Conference and Exhibition Committee, Lex De Man and the Forum Committee along with the ever present Tony Poole from High Profile Events.

## ESF History

As we move into our 30th year the Board has engaged Integrate Communications to document the history of this organisation. This project is expected to be completed in mid 2013. The project is under the guiding hand of our past Chairman, Laurie Lavelle.

## Summary

This year has seen change within the ESF however we are continuing to provide our support to the emergency services of Victoria. The continued support of government and the agencies will ensure our ongoing commitment in line with the vision of our founders.



**Peter Lester**, Director  
*Chairman Disaster and Relief Committee*

## ***From the Disaster and Relief Committee***

---

**D**uring 2012 the ESF remained ready to deliver on its fundamental objective of providing financial relief to members and families of emergency services workers who were injured or lost their lives while on duty.

This financial assistance takes the form of an immediate cash payment to the worker(s) or their family, currently set at \$10,000. The intent of this payment is to provide workers and families with sufficient funds to meet initial financial demands during what is a period of shock and great distress. Additional funds may be provided where additional assistance is sought and the need identified.

A letter of sympathy, the financial payment and a floral tribute is delivered by the ESF Chairman, or Deputy, on behalf of the Board at the earliest possible date. An obituary notice is also placed on behalf of the ESF in the Melbourne Herald Sun as appropriate and with consultation with the family.

While it is the core business of the Foundation it is with deep regret that I report the Foundation assisted two families following the deaths in the line of duty of two firefighters from CFA and DSE. The ESF was able to provide immediate assistance to the families of Second Lieutenant Peter Harry, and DSE firefighter Peter Cramer who was assisting with the Forcett fires in Tasmania. Our sincere condolences and thoughts are with their families and we acknowledge their bravery and commitment to their community.

### ***Emergency fundraising***

To date the ESF has been able to draw on its existing financial reserves to fund the relief program. However, this may not be possible in the case of a future large scale event. To ensure the ESF's capacity to raise additional revenue at short notice, arrangements are in place to leverage off the public appeal mechanism of a high profile Victorian charitable organisation if required. This approach will enable the ESF to continue to support those in need and in doing so help secure the long term future of the Foundation.





**Mark Swiney, MFB**  
*EMC Chairman*

## EMC 2012 Conference

The EMC 2012 conference, while experiencing a slight downturn in delegate and exhibition numbers, was a significant success. The event performed strongly, and provided a good result for the ESF.

EMC remains one of the top annual conferences on the EM calendar, and the committee sees scope to expand into broader constituencies in the longer term. It receives strong support from the Victorian emergency services agencies, and has a growing number of attendees from local government.

It is the only annual conference which provides a breadth of Emergency Management issues, in an environment which is open to participation by government, industry and community as well as emergency services. Not only is it an important forum for those involved at all levels of emergency management, this event gives strong profile to the Emergency Services Foundation.

Bob Parker, Mayor of Christchurch, a last minute addition as a keynote speaker was one of the best we have ever seen at EMC and there were a number of other significant speakers who supported a strong program.

The format of Diversity in Emergency Services was altered for 2012. It consisted of a full stream on Day 1 of the conference, and a workshop post the conference in September at the City of Melbourne Multicultural Hub. This was very successful and it is planned to have a workshop at EMC in 2013.

The 3rd stream on Day 2 was a special Critical Infrastructure program. It was coordinated by Dave Williams of the Victoria Police CIPU, and included an excellent cross-section of government, utilities and emergency services. The program concluded with a panel exercise on "Catastrophic Power Failure".

The 2012 committee was:

- Mark Swiney (Chair),  
*(Metropolitan Fire Brigade)*
- Doug Hocking, *(Victoria Police)*
- Mick Talbot, *(Victoria Police)*
- Peter Baker, *(Country Fire Authority)*
- Neil Akers, *(Ambulance Victoria)*
- Susan Fayers,  
*(Victoria State Emergency Service)*
- Ted Williams, *(Bureau of Meteorology)*
- Geoff Russell,  
*(Department of Human Services)*
- Heather Lakin, *(OESC)*
- John Laursen, *(Department of Transport)*
- John Schauble, *(Fire Services Commissioner)*
- Loriana Bethune, *(OESC/Diversity)*
- Aaron van Winden,  
*(Department of Sustainability & Environment)*

## ESF Conference and Dinner

The conference dinner followed the conference cocktail function which was planned by the ESF Alumni Association. They negotiated a number of sponsorships, arranged entertainment and promoted the event. This year, 150 guests attended.

The dinner M.C. was Darren James (3AW), and the guest speaker was Don McLardy, President of Melbourne Football Club, who gave an emotion-charged presentation centred on Jim Stynes.

The theme proposed by the committee for EMC 2013 is: Preparing Victoria.



## Conference Sponsors

Bureau of Meteorology

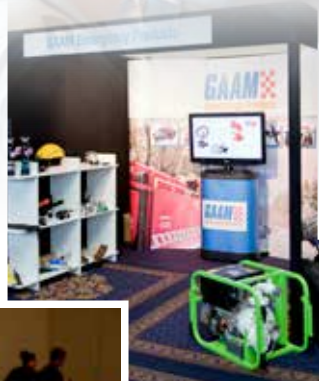
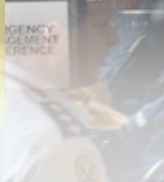
Office of the Emergency Services Commissioner

Fire Services Commissioner, Victoria

Department of Health & Human Services

Department of Transport

Department of Sustainability & Environment







Stephen Warren, VIC SES

## *The Alumni*

---

In the last five years the ESF Alumni has achieved many of its original objectives and created a structure to improve all aspects of the scholarship scheme. This has been achieved by the hard work of the management committee, support from the ESF board and particularly the ongoing management support of Jenny Davis.

The addition of new scholarships specifically for volunteers has been challenging and rewarding. The Alumni has had to work extra hard to promote and encourage volunteers to apply for scholarships. Addressing the reason why volunteers are not applying in strong numbers will be one of the greatest challenges for the coming years.

The Alumni maintained an active presence at the 2012 Emergency Management Conference by conducting a display booth to inform and attract conference participants into considering an ESF scholarship. The booth is supplied by the ESF Board and Alumni members give up their time to staff this area on a rotational basis throughout the conference. Great support by Alumni members willing to be part of the booth has made this activity very successful.

The conference dinner is also managed by the Alumni and provides conference attendees with entertainment and an outstanding guest speaker. This year proved to be a great success equalling the previous two years' attendance numbers.

An initiative this year, the Recipient Congratulations night, proved to be a huge success in concept and attendance. For the first time we gathered successful recipients together before they started their studies to hear about their study subjects.

The storage of scholarship reports in a knowledge bank continues and past scholarship recipients' reports are still being actively pursued to ensure their experience is available to share with others.

The Alumni is developing a traveller's loan kit with suitable suit cases and digital voice recorders to assist recipients who have not travelled nor have this type of equipment available. This pack contains information to help them prepare and complete a suitable report on their return.

Two information nights were held during the year and the interest is growing each time from prospective scholarship candidates. Increased applications and a noticeable improvement in the quality of applications has been achieved as a result of these information nights.

I would like to acknowledge the work undertaken by the Alumni management team, and continued support from the ESF Board (in particular past Chairman Laurie Lavelle and Jenny Davis) to the Alumni as it has grown in the last five years. I know with new President Adam Smibert and the current Alumni management team, the Alumni is in good hands and I look forward to their achievements.



**Shane Wright, MFB**

*Chairman Scholarship Committee*

## **Scholarships**

The purpose of the ESF Scholarship Scheme is to enable fellowships and grants to be made to members of the Victorian emergency services undertaking advanced studies on emergency service issues in Australia or overseas. The Scholarship Committee administers the Scheme on behalf of the Board.

During 2012, the Scholarship Committee had the privilege of reviewing a group of high quality applications. With the generous support of the Victorian Government, the ESF encouraged volunteers to participate in the volunteer scholarship award scheme. The awardees for 2012:

**Kylie Abraham - VICSES**

Maximising engagement of volunteer participants in emergency services training.

**Glen Bousa - CFA Volunteer**

Utilising water support units.

**Tony Bundock - CFA Volunteer**

Investigate best practice models of building a resilient emergency and rescue service within a contracting fiscal environment.

**Michael Campbell - MFB**

Investigating best practice in transferring emergency personnel and equipment to ships and strategies to combat marine fires and incidents.

**Carl Gibson - CFA**

Training methods to improve decision making and safety.

**Sergeant Andrew McKee - VICPOL**

Identifying capability and capacity opportunities to improve the delivery and development of eLearning programs to benefit multi-agency training and response at a state and national level.

**Stephen Walls - CFA**

Multi-agency training, education and professional development for strategic level incident managers.

**Matthew Anderson - VICPOL**

Complete the multi-agency silver (tactical) CBRN command course and acquire additional CBR training materials.

**Cliff Overton - MFB**

Research into the planning and creation of resilient places through improvements in land use planning strategy, policy and regulation.

**Rick Owen - CFA**

Post fire atmospheric monitoring in structures for public and responder safety.

**Mark Swiney - MFB**

Benchmarking systems and structures of large scale crisis management against outcomes of emergency management reform.

**Kerryn Wratt - AMBVIC**

Improving pre-hospital care in remote and wilderness environments of Victoria, Australia.

**David Goldfinch - Coastguard**

Effects of vibration and shock on the human body in the marine environment as well as systems and equipment to help protect crews.

**Casey Nunn - AMBVIC**

Techniques used to improve leadership skills and other schemes for the recruitment and retention of volunteers - An international emergency service perspective.

**Fiona Sewell - CFA**

Identify strategies to increase and sustain pre incident resilience in emergency service groups.

*Information on full scholarship studies is available on the ESF website [www.esf.com.au](http://www.esf.com.au)*

# Scholarship Testimonials

## **‘People and Place – creating resilient ecosystems’**

*I undertook an ESF study tour to the United States of America to investigate integrated land use and emergency management planning in urban centres. The study tour gave me so much more than I had hoped for. I came back from America with a wealth of information on planning and creating resilient places, as well as first-hand experience of how community engagement can work in a complex urban environment.*

*My program included an investigation of the city of San Francisco and meetings with the San Francisco Fire Department, planning department, and emergency management department. I was most impressed with the ‘Neighbourhood Emergency Response Team’ (NERT) program delivered by the fire department, and the number of community members they had reached with their program.*

*My visit to San Francisco was followed up by attending the 37th annual Natural Hazards Workshop in Broomfield, Colorado. This two day workshop gave me the opportunity to hear from experts in the emergency management field on their latest work.*

*I concluded the study tour with a visit to the University of Buffalo, where I met with academic staff involved in the development of the ‘Four R’ resilience model – one which may have application here in Australia.*

*I have been able to apply the knowledge gained in the study tour to work already underway in developing the next strategic plan for Melbourne.*

Cliff Overton - MFB

## **Improving pre-hospital care in remote and wilderness environments of Victoria, Australia**

*This project has proved extremely valuable in raising the profile of remote and wilderness response within Ambulance Victoria as well as providing a comprehensive analysis of world’s best practice in ambulance based remote and wilderness response.*

*I am hopeful this will translate into the strengthening of current response arrangements to increase paramedic safety and enhance patient care.*

*I travelled through Canada and the USA visiting with key agencies in rescue and wilderness medicine, undertook two wilderness medicine courses and attended the Wilderness Medicine Society (WMS), 6th World Congress of Wilderness Medicine. Whistler, British Columbia, Canada.*

**The key objectives of my research were:**

- Analyse the effectiveness of Ambulance Victoria’s current model through comparison with international models.
- Identify the occupational health and safety considerations of operating in wilderness alpine, subalpine and forested areas.
- Identify ways of managing the occupational health and safety considerations in wilderness alpine, subalpine and forested areas.
- Identify practical and cost effective ways of improving Ambulance Victoria’s current model.

*I addressed these objectives by applying the Systems Model of Accident Causation and Risk Control (SMACRC), developed by Dr David Borys of the University of Ballarat, to each of the visited agencies. This provided a structure within which I could analyse the approach of various agencies in responding to remote and wilderness environments.*

Kerryn Wratt - Ambulance Victoria



**John Warburton**

*Treasurer / Secretary, Finance & Risk Committee*

## **Financial & Governance Report**

*for the Financial Year ended 30 June 2012*

---

The Foundation has again completed a successful year, subject to the challenges presented by the continuing difficult investment earnings climate up to financial year end. Our annual conference event together with sponsor support for the Alumni annual conference dinner again made significant contributions toward covering our modest yearly administration costs.

This year saw a deficit on operations of \$65,738 (2011 \$88,744 surplus). Of this deficit, \$3,310 (2011 \$31,421 surplus) was attributed to Tynan/Eyre Memorial Fund which is administered by the Foundation.

Foundation & State Government funded scholarships amounting to \$126,655 (2011 \$89,514 including \$8,566 for Tynan/Eyre scholarships) were granted and paid during the year.

Abridged accounts are included in this Annual Report. Complete audited accounts are available from the Executive Officer upon request.

Over the past two years the State Government provided funds, 2011 \$75,000 and 2010 \$50,000, to be made available to enable emergency services volunteers to undertake study and research projects aimed at improving the delivery of services to residents and organisations in Victoria and to examine the opportunities for the understanding and lessening of hazards generally. All funds, apart from a small project management fee, have been directed to volunteer study scholarships or the annual volunteer conference.

The Foundation has a full time Executive Officer who is supported by the Chairman and Directors in undertaking the many tasks required for the Foundation to achieve its goals. In addition, the executive of the Alumni Sub Committee provide valuable assistance and support throughout the year. Apart from the executive officer, all individuals participate on a pro bono basis. This current structure allows us to operate at a very low annual cost level which is self funding via agency contributions, annual conference and dinner revenues, and income from investments.

## **Financial & Governance Report**

*for the Financial Year ended 30 June 2012 continued*

---

The Foundation receives financial and 'in kind' contributions from supporters who include lead emergency agencies, sponsors of our annual dinner and other events and our auditors, Crowe Horwath. We thank all stakeholders for their support.

The current unstable investment markets present ongoing challenges. Our investment approach has been to invest for the long term, but volatility in the market means that some years provide excellent returns while others provide little or no income. During the year, taking expert advice, we reduced our exposure to this volatility. This provides greater certainty of income, however, also leads to lower income which means that we have to access capital at times in order to pay for scholarships and provide personal relief to families when required. The Board is currently addressing this issue with the view to increasing its recurrent revenue so that capital can be preserved and increased over time.

The Board of the Foundation is made up of senior personnel from its supporting agencies and qualified members of the community. It has formal governance policies and risk management practices in place that are regularly reviewed and updated as required. A number of specialist sub committees also undertake relevant work when required.

I would like to take this opportunity to thank the Chairman, past Chairman, Board members, members of the Alumni and the Executive Officer for their support and dedicated work during the year.





# Income Statement

as at 30 June 2012

	2012 \$	2011 \$
<b>Revenue</b>		
Investment Income from managed funds <sup>^</sup>	-	100,729
State Government Grants allocated this period	73,700	59,500
Proceeds from conference	43,281	32,448
Administration contributions	17,875	17,875
Imputed credit refunds	5,308	3,545
Alumni dinner sponsors	14,086	27,000
Alumni membership fees	-	100
Project management (State Government Grant)	7,500	-
<b>Total revenue</b>	<b>161,750</b>	<b>241,197</b>
<b>Expenditure</b>		
Investment Income from managed funds	11,343	-
Scholarships <sup>*</sup>	52,955	31,014
Volunteer scholarships paid this period	73,700	59,500
Personal assistance payments	14,100	-
Executive assistant payments	59,640	47,320
Audit fees	1,320	1,320
Insurance	2,741	3,271
Other expenses	11,689	10,028
<b>Total expenditure</b>	<b>227,488</b>	<b>152,453</b>
<b>Surplus (Deficit) for year</b>	<b>(65,738)</b>	<b>88,744</b>

<sup>^</sup>Managed fund investment income include funds managed on behalf of the Tynan-Eyre Memorial Fund \$5,604 (loss) (2011) \$44,301.

<sup>\*</sup>Tynan-Eyre Memorial Fund scholarships NIL (2011 \$8,566)

This is an abridged version of the accounts of the Foundation which are audited by Crowe Horwath. A copy of the full audited accounts is available on request to the Foundation.

# Statement of Financial Position

as at 30 June 2012

	2012 \$	2011 \$
<b>Current Assets</b>		
Cash assets	2,626	93,476
<b>Total current assets</b>	<b>2,626</b>	<b>93,476</b>
<b>Non current assets</b>		
Managed fund investments^	1,143,057	1,209,401
<b>Total assets</b>	<b>1,145,683</b>	<b>1,302,877</b>
<b>Current liabilities</b>		
Income received in advance	24,300	118,000
Payables	4,360	5,611
Bank overdraft	3,495	-
<b>Total current liabilities</b>	<b>32,155</b>	<b>123,611</b>
<b>Net Assets</b>	<b>1,113,528</b>	<b>1,179,266</b>
<b>Equity</b>		
Accumulated funds	1,113,528	1,179,266
<b>Total equity</b>	<b>1,113,528</b>	<b>1,179,266</b>

*^Managed fund investments include funds managed on behalf of the Tynan-Eyre Memorial Fund.  
\$510,324 (2011 \$514,465)*

This is an abridged version of the accounts of the Foundation which are audited by Crowe Horwath. A copy of the full audited accounts is available on request to the Foundation.

# Scholarship Testimonials

## Identify strategies to increase and sustain pre incident resilience in emergency service groups

The study has taken place here in Victoria, South Australia and NSW and I have met and learnt from representatives from CFA, Victoria Police, NSW SES, South Australian Fire & Emergency Services Commission, Mental Health Foundation of Australia, National Disaster Resiliency Centre at Monash University, and Torrens Resiliency Institute in South Australia. Evidence had been gathered from three cohorts within CFA and my last interviews with additional agencies here in Victoria are taking place over the next few weeks.

The ESF scholarship enabled me to have the financial support to invest my volunteering hours into areas of learning and development that matter most to me. It provided me with the privilege of learning from the expertise we have here in SE Australia and gave me a deeper appreciation for the volume and scope of work that is being undertaken behind the scenes by both our first responder groups and the agencies which support them. Above all the opportunity has enhanced my knowledge of how to take care of my group, my community and myself.

Fiona Sewell - CFA

## Crisis emergency management

### Benchmarking systems and structures of large scale crisis management against outcomes of emergency management reform

The aim of my ESF scholarship was to research the high level state arrangements for the command, control and coordination of 'All Hazards All Agencies' emergencies in USA focusing on Louisiana, Arizona and California. The research focused on the structure at the State level to manage emergencies and how the State interacts at regional and local levels.

Key outcomes of my research included:

- Police and Fire departments working collaboratively together to enhance public safety in a concept called 'Fusion Centre'.
- Emergency management is the responsibility of the local county (municipality) 'it starts at the local level and is managed by the local level' – some do it well some do not, depending on the size and resources available.
- Control centres tend to be structured in a pod arrangement rather than rows of desks facing the front of the room.
- Counties have their own Police and Fire Departments and they rely heavily on mutual aid from neighbouring counties.
- Use of WebEOC as an emergency management tool.

Mark Swiney - MFB

## Effects of vibration and shock on the human body in the marine environment as well as systems and equipment to help protect crews

This study tour was a fantastic opportunity to have some input into the future design and safety aspects of marine fast response rescue vessels. It will lead to protecting crews who operate in very harsh and dangerous conditions. As part of the study I travelled to the Royal Life Boat Institute in the UK and the Swedish Sea Rescue organisation where I visited a manufacturer of shock-mitigating seats.

I also went to Cape Disappointment on the US west coast to tour a Coast Guard surf boat school and another shock-seat manufacturer in Canada.

By visiting these organisations I have been able to look at and assess the current best practice in crew protection systems, and I now hope to apply that knowledge for the betterment of all Emergency Services Organisations within Victoria and Australia.

David Goldfinch - Coastguard



[www.esf.com.au](http://www.esf.com.au)